



Industry Day

Oct. 22, 2019



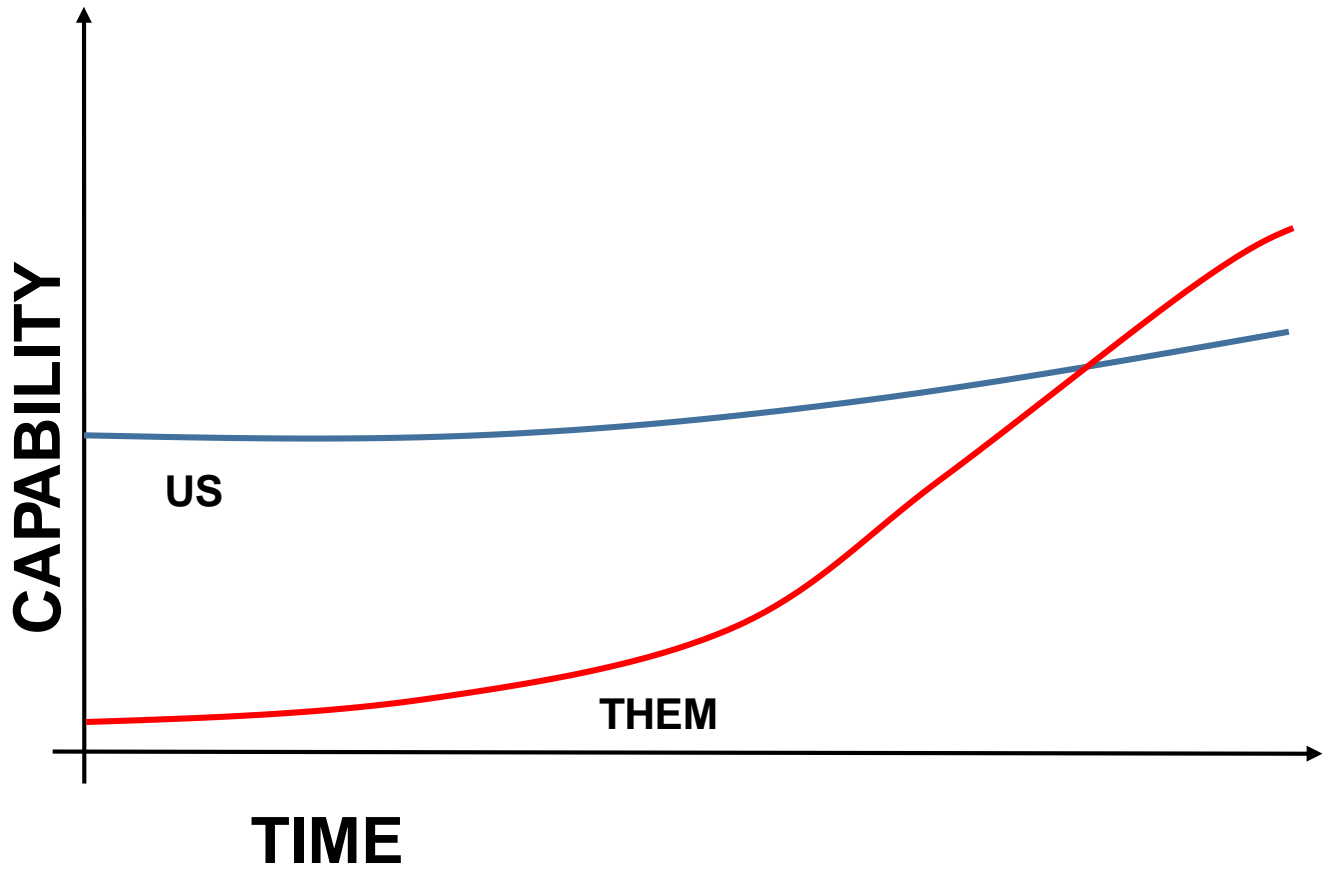
Agenda

- I. Introduction
- II. The Why and How
- III. Mission Integration Cell
- IV. Org. Chart
- V. Discussion



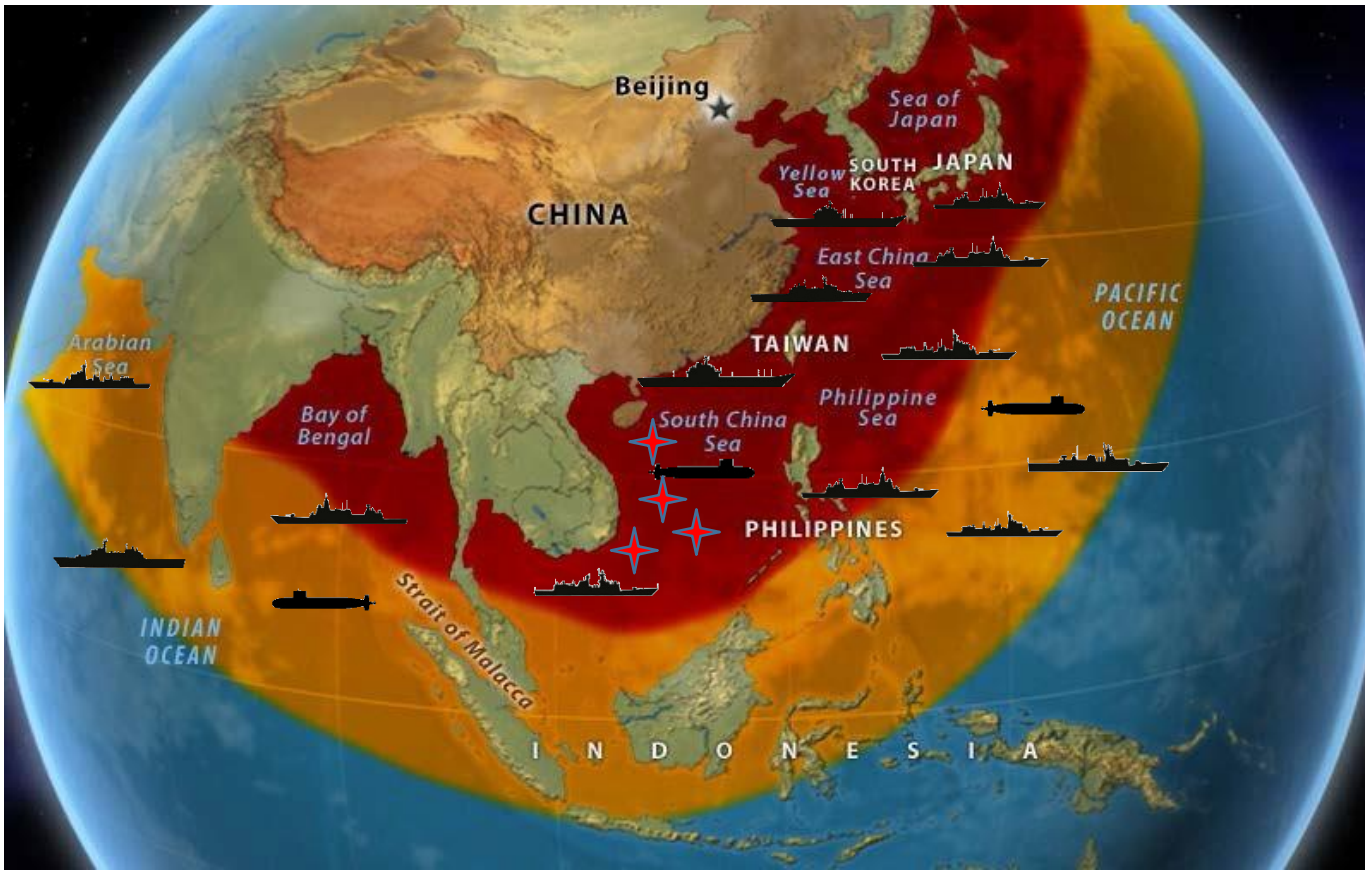
The Why

The Whiteboard View

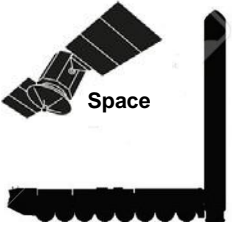




The Why Increasing Chinese Military Capability in Indo-Pacific since 2000



New PLA Capabilities since 2000



Ballistic missiles

Advanced SAMs

Advanced Radars and Jammers

Unmanned a/c

4th Gen+ a/c

5th Gen

AEW and EW a/c

Y-9 and Y-20 transport a/c



Tenets of MAO

The key principles of mission alignment are:

1. **DELEGATE** and empower. Move resources and decision authority closer to the point of execution.
2. **INTEGRATE** functional disciplines. Create diverse teams working together toward a common goal.
3. **ADAPT** to the outcome. Adapt the approach to reach the desired outcome. Design and operate with the end in mind.

Vice Commander
CMC

NAWCAD Commander
Executive Director
SES

Product Directors

Direct Support to PEOs, PMs, Other Customers

Mission Integration Cell (MIC)

- System Acquisition Group
SES
- Air Systems Group
SES
- Mission Systems Group
SES
- Digital Analytics, Infrastructure & Technology Advancement Group
SES
- Program Management
- Procurement
- Comptroller
- Counsel
- Command Operations
- NAWCAD Training Systems Division *COM*
- Naval Test Wing Atlantic *COM*
- NAWCAD SE & ALRE (LKE) *SES*
- NAWCAD Rapid Capability Eng. (WOLF) *SSTM*

ECH III - MAN, TRAIN, EQUIP

ECH IV - MTE

ECH IV(C) - MTE

- Systems Engineering
- Cost & Schedule Analysis
- Human Systems Engineering
- Logistics Integration
- Air Vehicle Engineering
- Propulsion and Power Engineering
- Air Systems Logistics
- Air Systems Product Integrity
- Avionics & E*Warfare
- Software Engineering
- Mission Systems Logistics
- Mission Systems Product Integrity
- Mission Engineering & Analysis
- Advanced Tech Development
- Program Labs & Software Support
- Prototyping Instrumentation and Experiment
- Cyber Warfare
- Integrated Battlespace Simulation & Test
- Atlantic Test Ranges & Targets
- Digital / Network Applications
- Program Management
- Procurement
- Comptroller
- Counsel
- Command Operations
- Training Systems
- Developmental Test & Evaluation
- Support Equipment / Aircraft Launch and Recovery
- Rapid Capability Engineering

Outcomes & Solutions





Mission Integration Cell

- NAWCAD's daily drumbeat provides agile support to our PEO/PMA customers.
- Product Directors and group leads collaborate with MIC on PEO needs and concerns to develop solutions and approaches from the breadth and depth of NAWCAD.
- Fosters a shared consciousness of NAWCAD information flow and decision making.

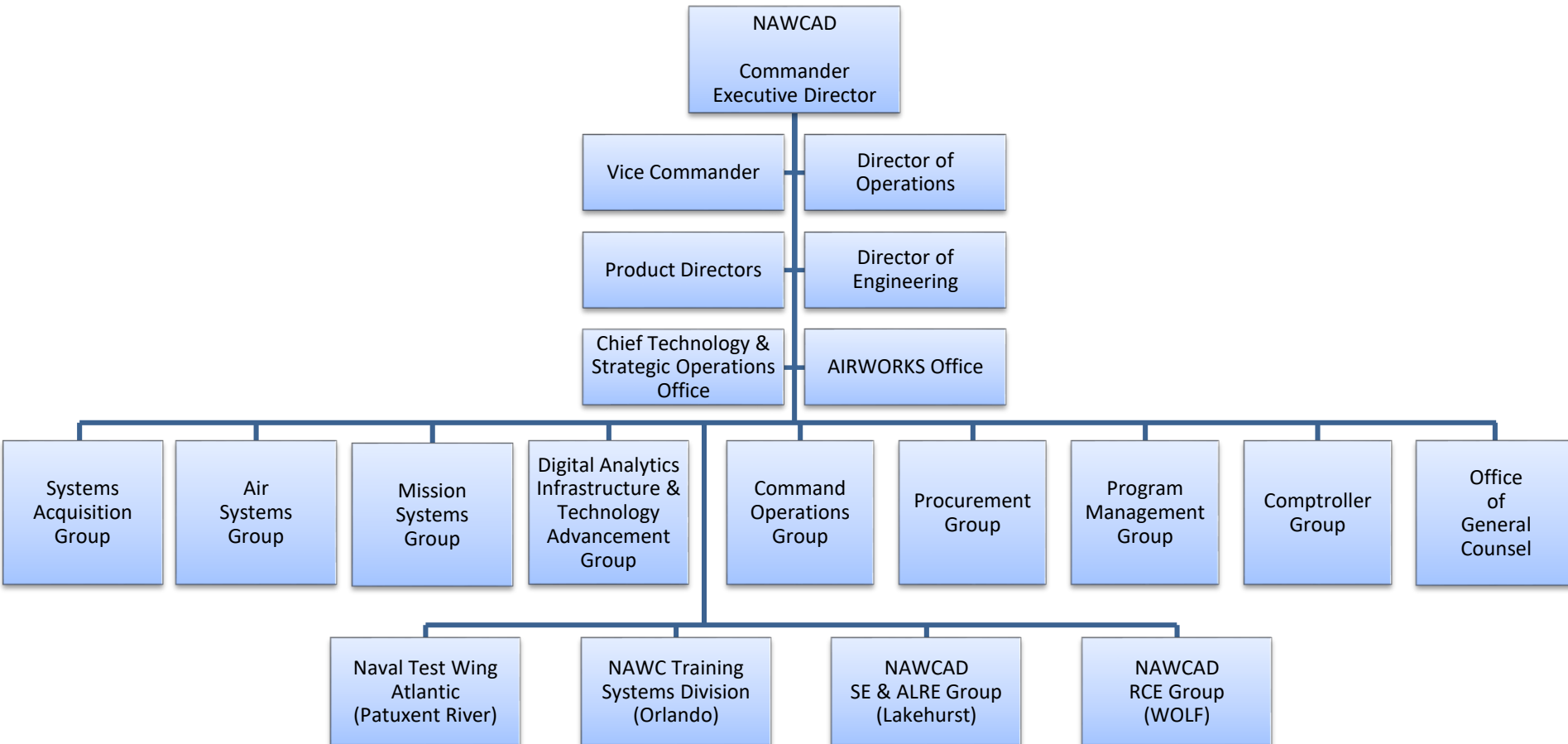


NAWCAD Mission Integration Cell (MIC) Agenda

- Mission Capability (MC) Snapshot
- News
- Significant Command Events
- Admiral Schedule
- Mission Integration Cell Upcoming Topics
- Product Directors
 - PEO(T)
 - PEO(A)
 - PEO(U&W)
 - PEO(JSF)
 - PEO(Common Systems)
- Group Directors
 - System Acquisition
 - Mission Systems
 - Air Systems
 - Data Analytics, Infrastructure, & Tech Advancement (DAiTA)
 - Acquisition Business Command (ABC) Operations
- Echelon IV
 - NTWL
 - NAWCTSD
 - Lakehurst
 - WOLF

NAWCAD

Major Groups, Executives, Commands and Offices





DISCUSSION